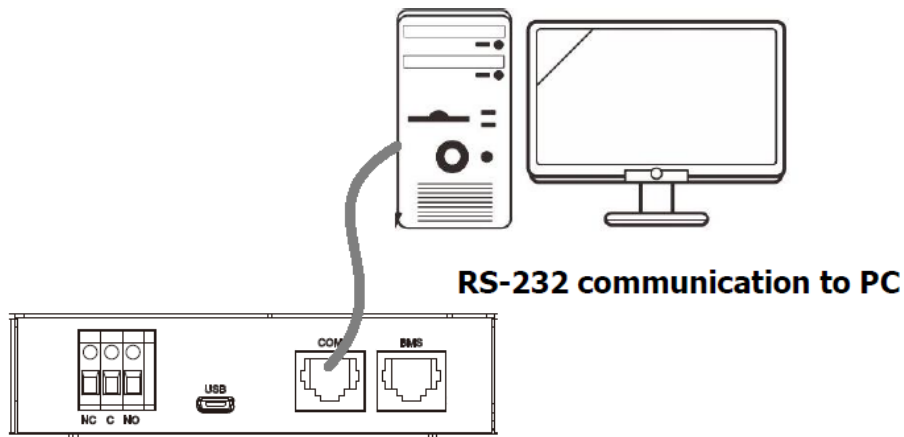


## Communication Board Firmware Upgrade Process

**Step1.** Connect the unit and the PC via RS-232 communication cable.



or

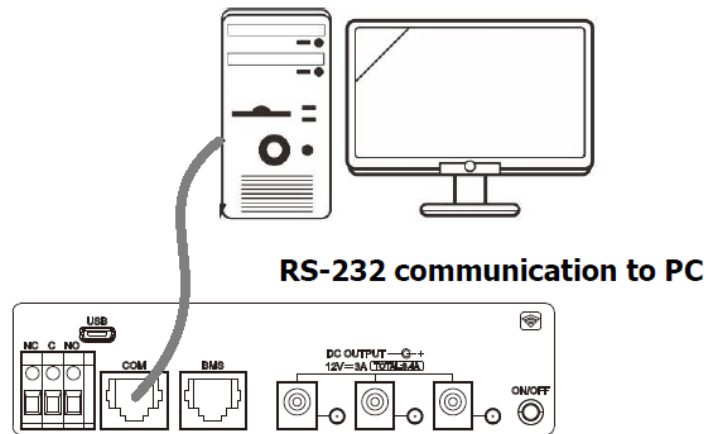


Figure 1

**Step2.** Once the unit has been properly installed and the batteries are connected well, simply press On/Off switch to turn on the unit. Make sure the LCD is lit normally.

**Step3.** Please check the COM Port Number as below pictures.

**NOTE:** Make sure all application communication software using this COM port is turned off, including some UPS monitoring software.

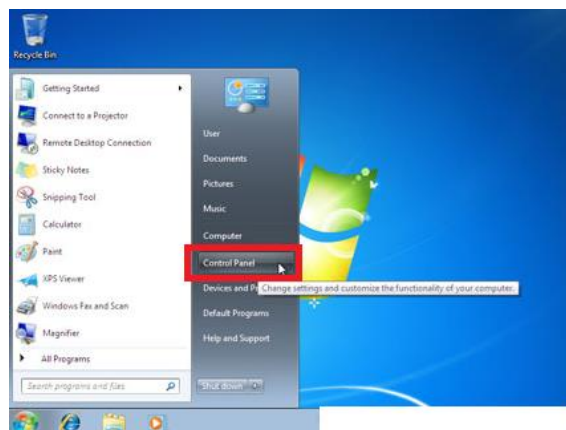


Figure 2



Figure 3

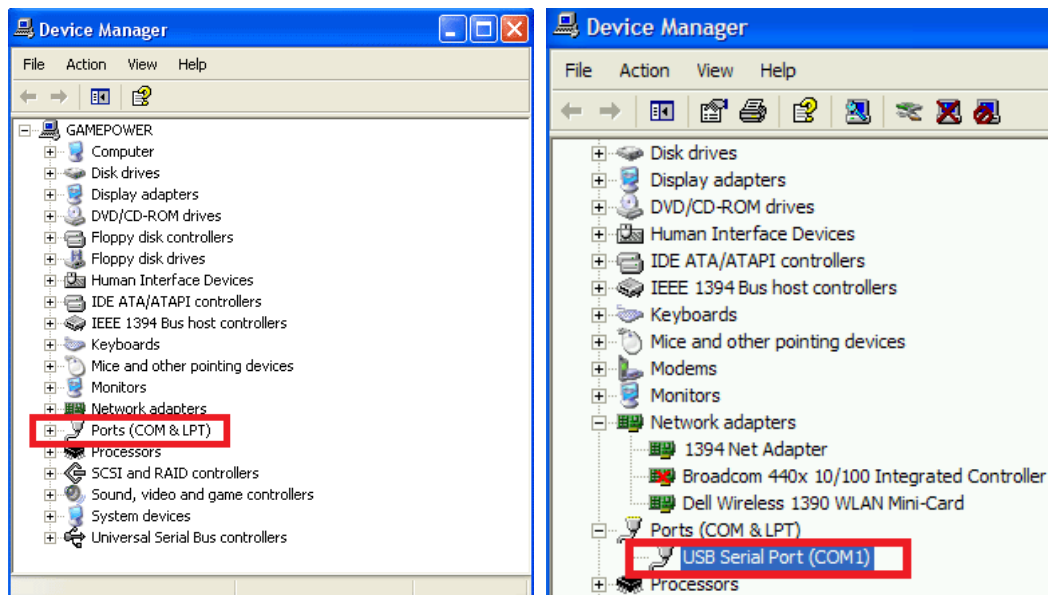


Figure 4

**Step4.** Execute "Remote Panel\_ReflashTool.exe". Please refer to below picture.

important.txt	2017/3/22 下午 0...	文字文件	1 KB
mcu.hex	2018/9/12 下午 0...	HEX 檔案	319 KB
MFC42D.DLL	1998/6/17 上午 1...	應用程式擴充	909 KB
MFCN42D.DLL	1998/6/17 上午 1...	應用程式擴充	61 KB
MFCO42D.DLL	1998/6/17 上午 1...	應用程式擴充	781 KB
MSVCRTD.DLL	1998/6/17 上午 1...	應用程式擴充	377 KB
Remote Panel_ReflashTool.exe	2017/3/20 上午 1...	應用程式	181 KB
winmm.dll	2008/4/14 下午 0...	應用程式擴充	160 KB

Figure 5

**Step5.** Click "Update MCU" to upgrade firmware. Please refer to below picture.

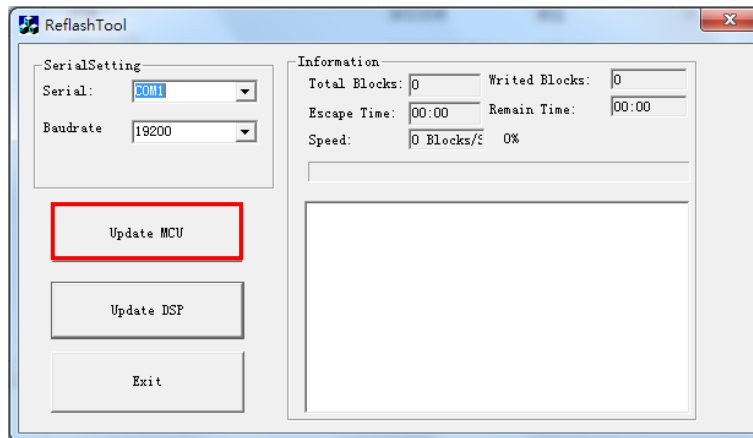


Figure 6

Please wait for about ten seconds.

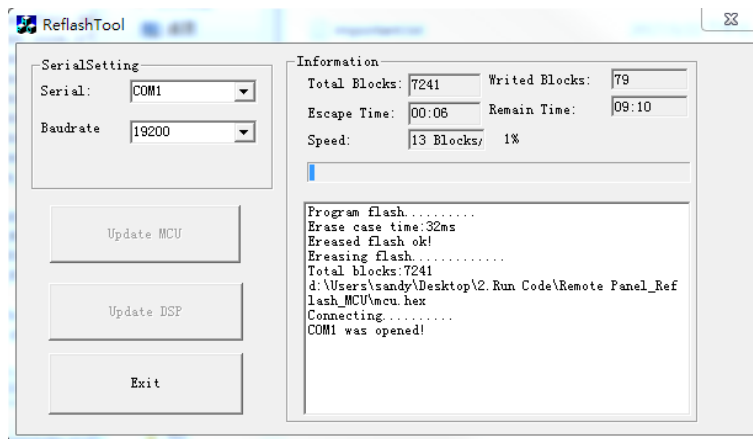


Figure 7

**Step6.** After the firmware upgrade successful, you can see the information as below. Click "Exit".

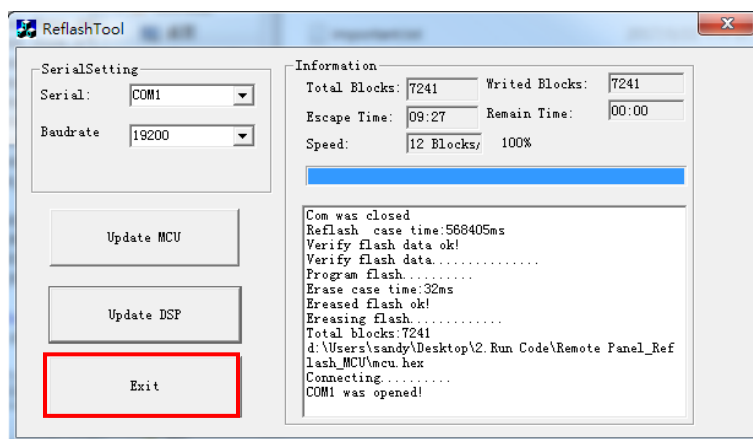


Figure 8